

Table 6.2 Comparison of Travel Times between Washington, D.C., and Chicago, Illinois

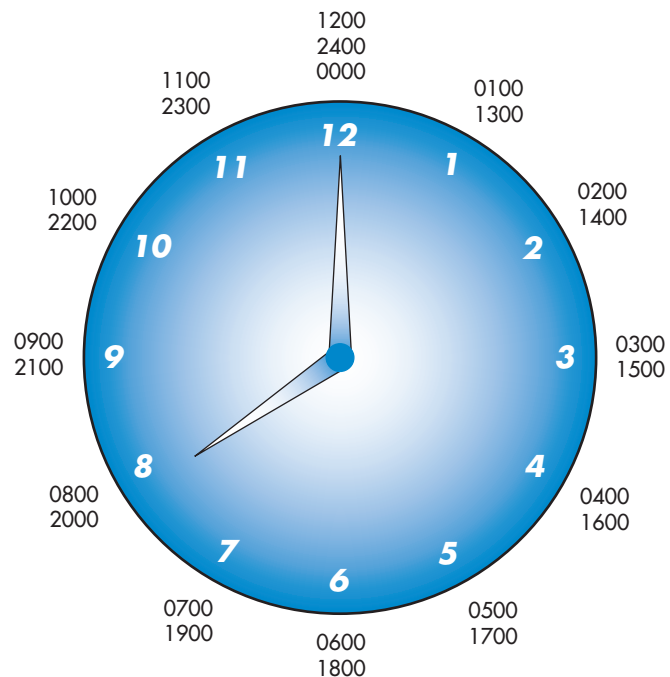
Mode of Transportation	Approximate Travel Times (hr)
Airplane	1.5
Bus	19
Car	12
Train	17

Note: The above time estimates factor in check-in lead times and transportation to terminals.

Source: Based on “The deals on the bus” in *USA Today*, January 18, 2008.

FIGURE 6.2

The 24-hour clock.



The international standard for transportation timetables is the 24-hour clock. Figure 6.2 presents a visual example of the 24-hour clock. Notice that by using this style of timekeeping, there is no need for either A.M. or P.M. designations.

Surface Transportation

Just like modern travelers, early travelers probably used both land and water. Modern modes of surface transportation were ushered in with the development of sailing vessels and then passenger railroads, and grew with increased personal ownership of automobiles, availability of rental vehicles, and the convenience of motorcoach services. We will briefly examine important historical developments as well as key issues associated with each of these modes of transportation.

Plying the Waves

The power of the wind behind a good sail moved passengers across countless miles of water to many locations for business and pleasure. However, no matter how sleek or fast